



Calvary's Rose

Bookmark

Calvary's Rose Bookmark, Page 1.

© 2009 Angie Kowalsky
 Linen Flowers Designs
<http://linenflowers.com>

Design size: 28 w x 82 h.

Finished size: 2 1/4 x 6 1/4".

Stitched with Size 8 DMC Perle Cotton in White and DMC Floss on 25 ct. Linen.

Use one strand Perle Cotton for Hardanger and special stitches, 2 strands DMC floss for regular stitches, and one strand floss for backstitches (stems).

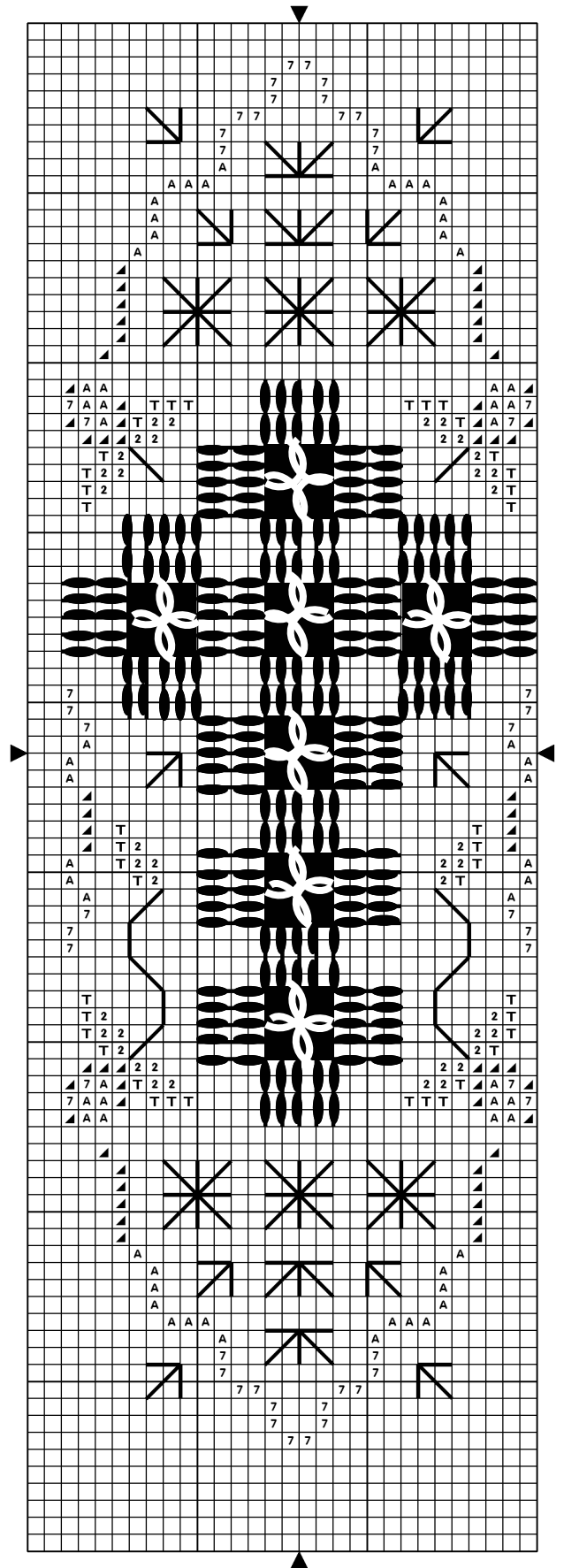
See Pages 2 and 3 For Beginning Instructions.

**Backstitch colors: Stems: 502.
 DMC Symbol Chart Below.**

▲	321	Red
7	818	Powder pink
T	3813	Light green
2	502	Blue green
A	3716	Candyfloss pink



L I N E N F L O W E R S





LINEN FLOWERS

Instructions: Work Hardanger Cross first in design, beginning at top of Cross. (Use chart this page).

Work Kloster Blocks with 1 strand Size 8 Perle Cotton, following arrows and numbers so that you can keep working with your thread with a minimum of cuts.

Always begin and end off thread with enough to weave through 5 sets of blocks on back sides. (Do not cross centers on back). See "Working And Cutting Kloster Blocks" on Page 3. Also complete Dove's Eyes (See Page 3).

When finished with Hardanger Cross, work regular Cross Stitches and all other stitches, using chart on Page 1.

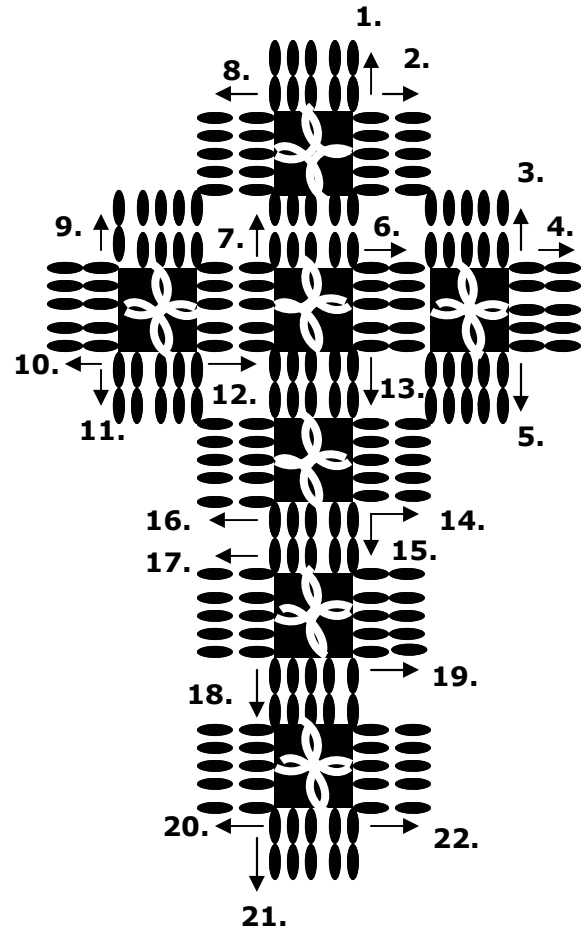
Hardanger Cross: (Chart at Right)

(Note: Arrows show direction thread is worked away from center of block).

Arrows and numbers are provided so that you can keep working with your thread with a minimum of cuts.

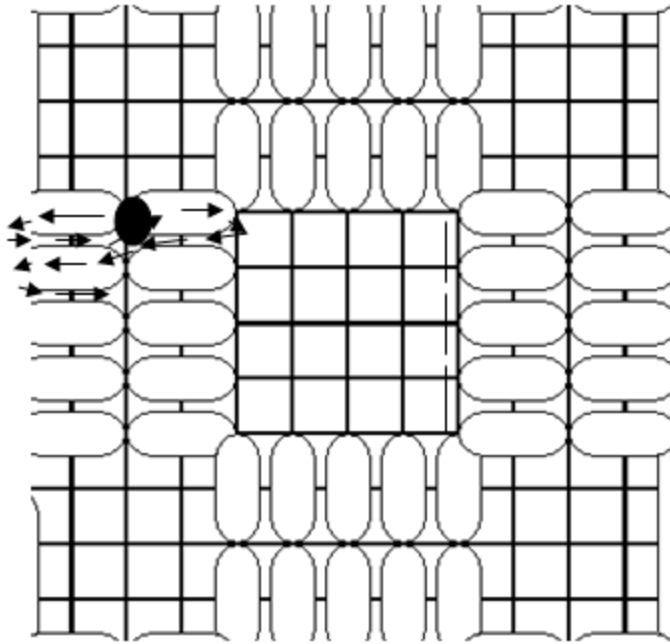
Optional: You can use the cutting guide below, or use your own.

**Start thread at 1, stop and weave in after 12.
Start thread at 13, stop and weave in after 16.
Start thread at 17, stop and weave in after 19.
Start thread at 20, stop and weave in after 22.**





Working And Cutting Kloster Blocks



Come up with needle at center point of where 2 woven bars will be (see black dot).

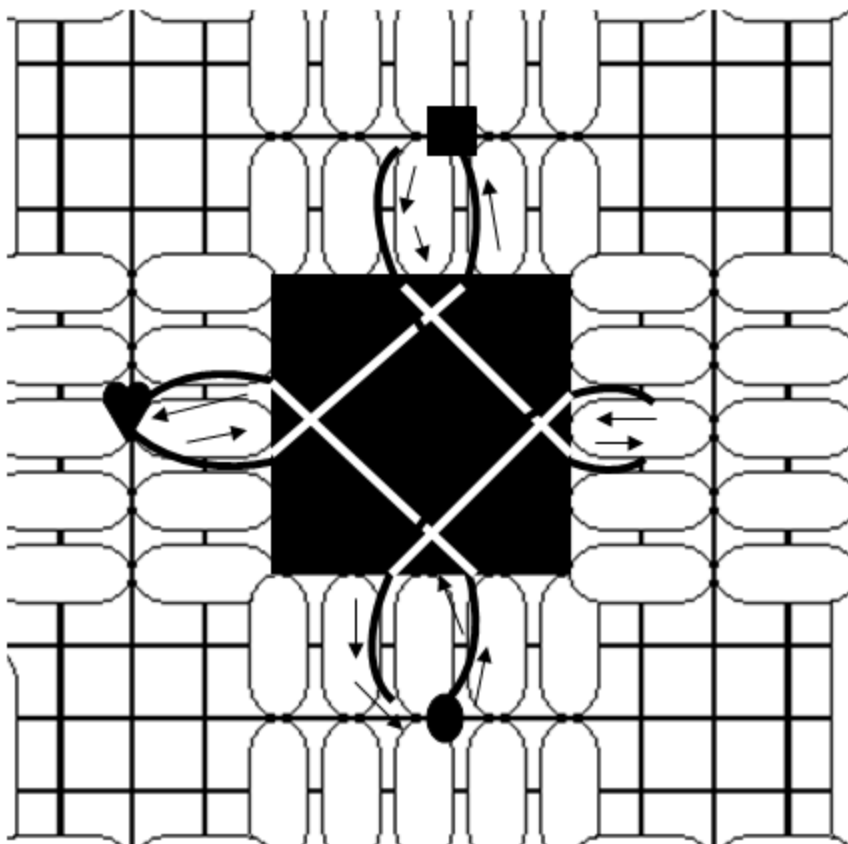
Work straight back away from center block (see arrow to left), come up at center dot again, and work over thread beside block to be cut out (see arrow to right).

Then weave down in next row and come up below dot- work in same manner around. (Picture a figure 8 while stitching).

Work this before cutting out center block, being sure that you always cut with the stitches at your right. (See dotted line).

Finally, work dove's eye in cut out block .

How To Do a Dove's Eye



Be sure that woven bars and cutwork have been completed before beginning dove's eye. Come up at the center of a woven bar group (see black dot), go down at the center of next woven bar group (see heart). Come up on center of next woven bar group (see square). Repeat for last side, work back to the beginning, and end off by weaving in end on wrong side. Completed dove's eye should resemble this:

