

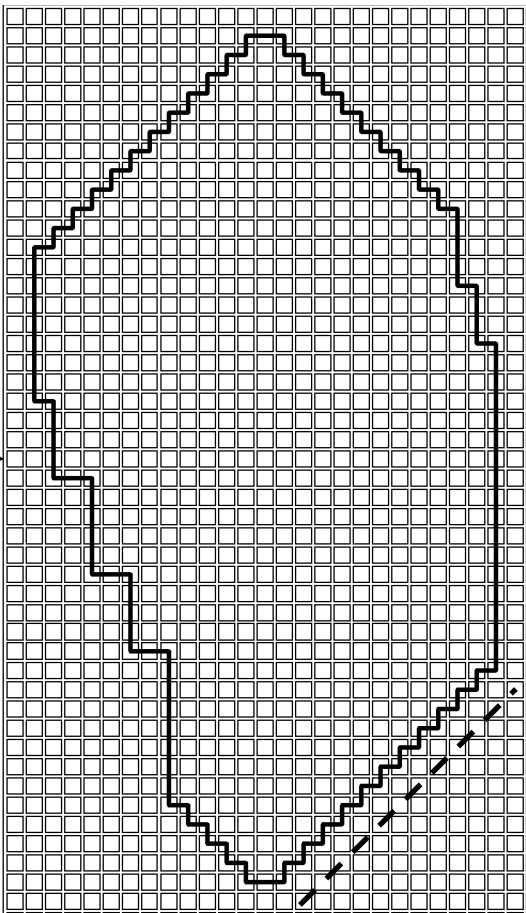


Poinsettia Decoration

Complimentary Pattern © 2013 Angie Kowalsky
Linen Flowers/Timeless Handwork
Website: <http://linenflowers.com>

Timeless Handwork

(Below) Leaf- Cut 2 From Green.
23 holes w x 43 holes h.



Size: Flower measures approx. 8 1/2" across.

Flower with leaf measures approx. 9 1/3" across.

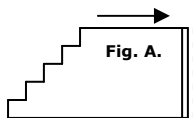
Materials: 1 sheet Red 7 mesh plastic canvas, 1 sheet Green 7 mesh plastic canvas, small amounts Red, Gold, and Green yarns, tapestry needle for sewing on plastic canvas.

Directions: Make poinsettia first.

(Optional: You may fill in all pieces with yarn if desired).

After cutting 6 petals from Red plastic canvas, cut an 18" (approx.) piece of Red yarn, and thread needle.

1. Fold one petal in half at flat edge on bottom, and sew this edge together. *Sew from the bottom up.



(Do not sew the top (Fig. A) yet). Do not cut yarn- leave it hanging. Lay aside. Repeat for each petal piece.

Hold Fig. A of one petal beside Fig. A. of another petal together, using one of the leftover strands of yarn, sew both pieces across Fig. A, toward the jagged edges. (You will sew only their centers together, but the outer edges will be joined with the next seam).



Finish by weaving yarn end under sewn area.

Keep repeating until all of the petal pieces have been joined together at the center.

2. Turn poinsettia over and, with Red yarn, sew back points together in a circle to reinforce.

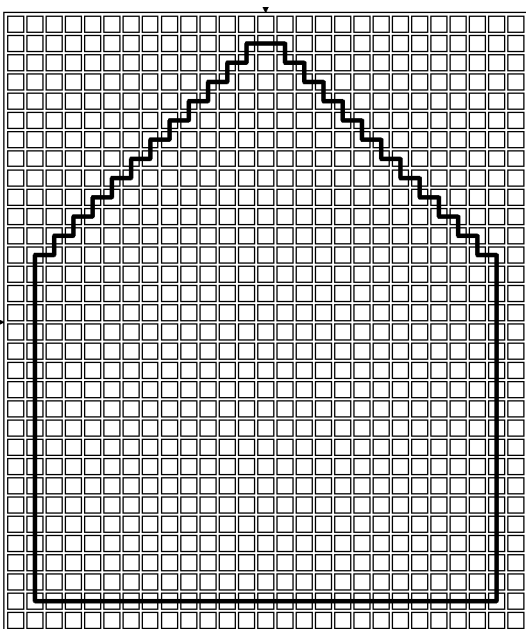
3. With a long piece of Gold yarn, make French knots on the top inner circle of the Poinsettia.

4. Leaves: After cutting out 2 leaf pieces from Green, place one on top of another (edges aligned). With a long piece of Green yarn, whipstitch area represented by dashed line on the graph. Weave in ends about half way on sewing (do not cut yarn; drop needle for a minute).

Open up leaf piece with your fingers by flipping one leaf over, and press out flat. Place the area you stopped stitching under the center back of the Poinsettia. Sew this area to the back of the Poinsettia. You may need to put a few anchor stitches inside the petals, but try to keep them hidden.

Optional: If a hanger space is needed, you might cut out a small square from one petal end. The holes in the plastic canvas should be large enough to insert an ornament wire if hanging on a tree, wreath, etc.

(Below) Petal- Cut 6 from Red.
23 holes w x 28 holes h.



Back Fold Area

