



Snow Style

Complimentary Pattern By Linen Flowers
© 2011 Angie Kowalsky
Website: <http://linenflowers.com>



L I N E N F L O W E R S



Design size: 28 w x 33 h.

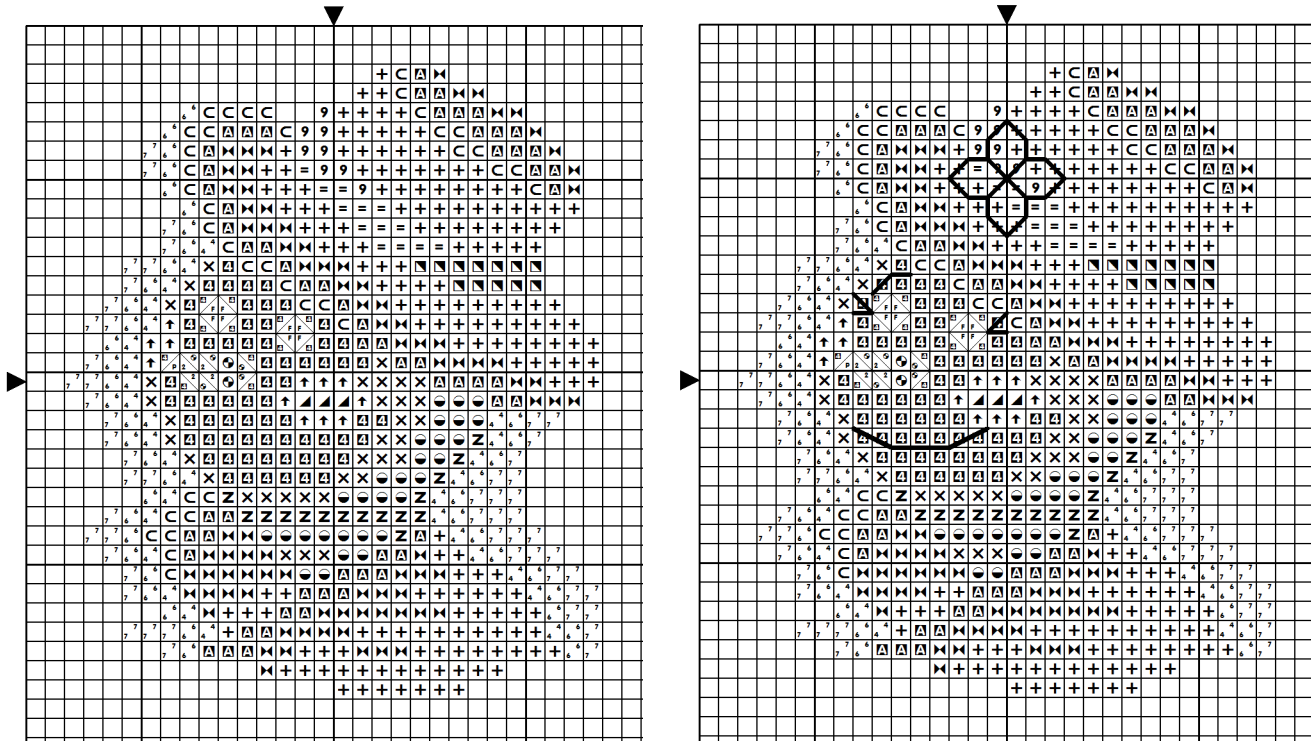
Use 2 strands over 2 threads for regular stitches, and 1 strand for Backstitching.

Backstitch Colors: Hat: 5200 (Bright White), Eyes, Mouth: 310 (Black).

Some fractional stitches are present on face.

Note: 2 symbols in the same square represent Half Stitches.

Use a Fabric Calculator to determine finished size on your favorite fabric.



DMC Symbol Chart Below

	5200	B Bright white		3756	Cloud blue
	775	Summer rain blue		3325	Azur blue
	310	Black		721	Papaya orange
	722	Orange spice		3825	Mango orange
	718	Magenta		666	Bright red
	3607	Pink plum		917	Bougainvillea fuschia
	915	Dark plum		3689	Rose petal pink
	3705	Pale red		3801	Tulip red
	818	Powder pink		738	Sahara cream
	739	Dune cream		712	Cream

To stitch Snow Style, you will need DMC Floss: 310 (Black), 666, 712, 718, 721, 722, 738, 739, 775, 818, 915, 917, 3325, 3607, 3689, 3705, 3756, 3801, 3825, 5200 (Bright White).